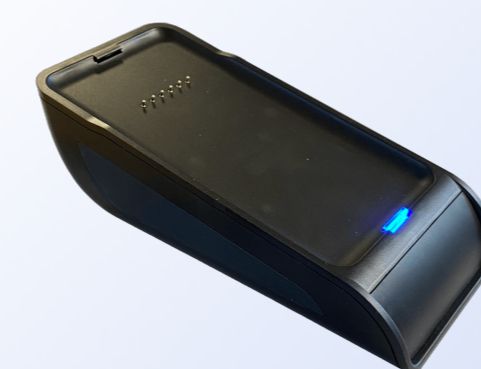


The Stand-alone terminal

# SurfPad

Card payments	Contact chip and contactless with PIN
CPU	Secure ARM Cortex M3
Buttons	On/Off button, 10 numeric buttons 5 function buttons
Display	320 x 240 px touch screen display
Smart Card Reader	Landing type
Contactless reader	NFC-A, ISO 14443 Type A, NFC-B, ISO 14443 Type B, NFC-F, Felica, NFC-V, ISO 15693
Contactless payments	VISA payWave, MasterCard PayPass, American Express, DPAS (Discover), China UnionPay, J/Speedy (JCB), Common.SECC
Connectors	RS-232 contact pins, USB Type-C port, SAM card slot (optional), SIM card slot (optional)
Wireless	Wi-Fi IEEE 802.11 b/g/n
Cellular	2G/3G/4G communication
Battery	Rechargeable Li-Ion Battery 3.7 V, 1180 mAh
Certificates	CE, FCC, PCI PTS 4.x, EMV Level 1, EMV Level 2, EMV Level 1 Contactless, TQM
Dimensions W x D x H	71 x 133 x 19 mm
Weight	180 g
Drop tested	1.2 m, faces and edges
Operational temperature	-10 °C to 40 °C
Power Supply	DC 5 V through USB DC 5 V through contact pins

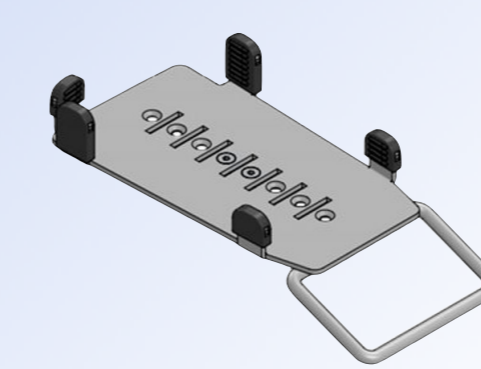
## Accessories



**Charger stand**

Including cable

## Mounting



**Multigrip Handle**

Holder for the terminal



**DuraTilt Counter**

Metallic stand for handle



**Mounting Pole**

Plastic stand for handle



**U-Frame**

Tablet holder